

# Six

## amazing characteristics of the toddler transitioning to CH

2

### Start with the Basics



The child emerging out of toddlerhood is receptive and excited about routines and protocols. They have a high need for order, and the routines and protocols you have in your class help them learn how to engage with the environment and others. *Spend time giving small group and individual lessons around the routines and protocols in your class early and often. This practice will be invaluable.*

5

### Moving Into Consciousness

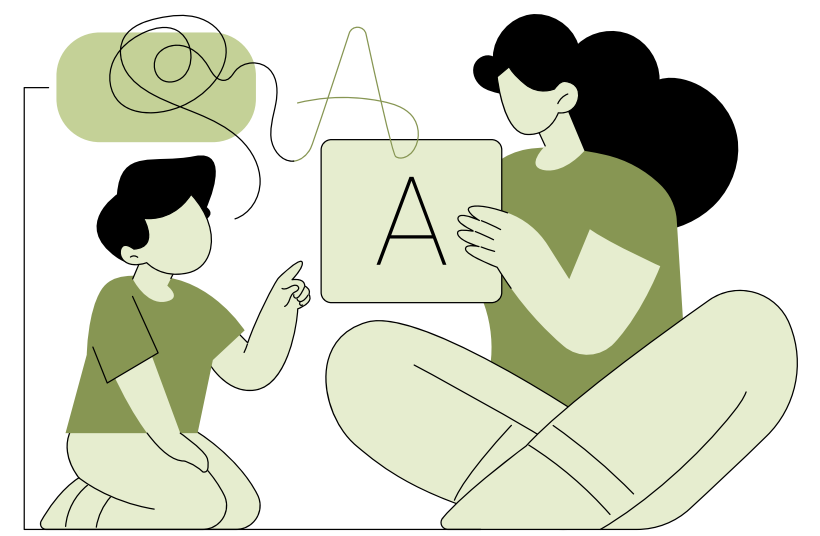
One of the biggest steps for the toddler moving into CH is moving into consciousness. Not all toddlers will have crossed this bridge. *Connecting them to the sensory, practical life, and cultural areas of the classroom early on will help them as they move along this path.*



1

### Language is Emerging

Depending on the unique child, their language is evolving. They are in the sensitive period for language, and they have a strong motivation to communicate--even if the words can't keep up with what their heart and mind want to do. *Make immersing the young child into early language activities a priority.*



3

### Almost Ready for Independence

Although the child is moving into the "I do it myself" phase, they may still be in a state of transition. The young child is used to the adult being the center of their exploration and their environment. *You may need to adjust your proximity and connection to the child early in the transition process as the child builds confidence in their independence.*



4

### Big Movement Energy

The child feels the most comfortable with big movements. This is where they have the greatest confidence. They will still want to practice this skill and have yet to refine and coordinate their movements. *Be patient as the child continues to work to refine their movement and introduce the child to the CH practical life activities.*



6

### Integration Coming Soon!

Integration is the work of CH. The toddler has the parts and will engage in integration work during their time in the child's house. *Calibrate your expectations accordingly.*

